

MID-ATLANTIC REGIONAL SPACEPORT FACILITIES STUDY

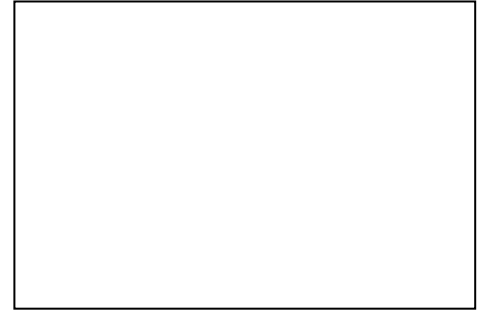
Facility Name and Number: **Payload Processing Facility,
Building H-100**

Facility Operations Manager: Rob Hurley

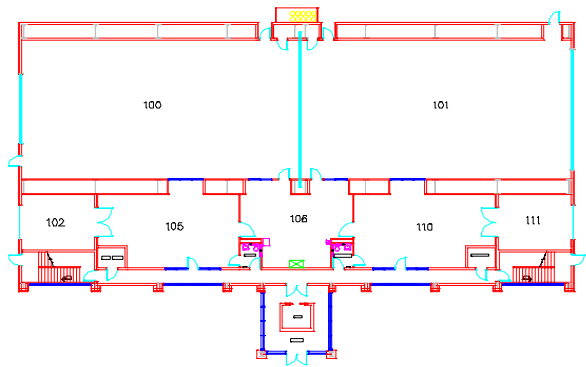
Facility Picture:



Site Map:



Facility Floor Plan:



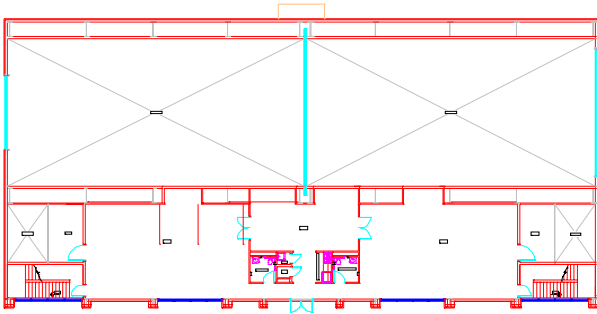
FIRST FLOOR PLAN



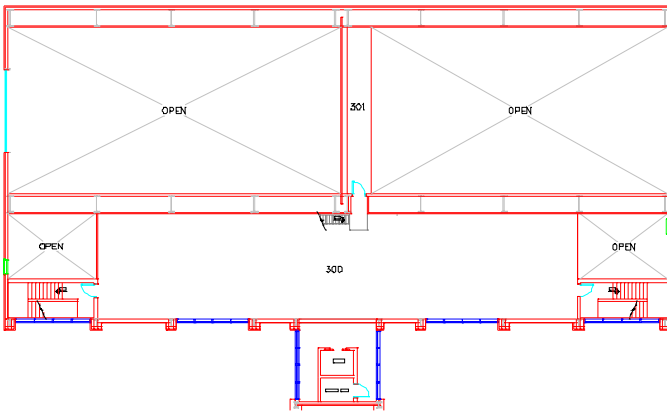
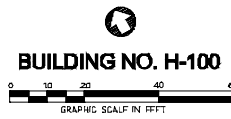
MID-ATLANTIC REGIONAL SPACEPORT FACILITIES STUDY

Facility Name and Number:

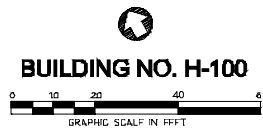
Payload Processing Facility, Building H-100



SECOND FLOOR PLAN



THIRD FLOOR PLAN



General Information:

General Facility Information	
Facility Type <i>(Launch, Launch Support, Payload Processing, Storage, or Other)</i>	Payload Processing - Vehicle Assembly Processing
Facility Condition <i>(Good, Fair, Poor)</i>	Excellent
Current Programs Supported	Available Fall 2006

Mid-Atlantic Regional Spaceport
4211 Colley Ave.
P.O. Box 6369
Norfolk, VA 23508-0369
PH. 757-440-4020

Mid-Atlantic Regional Spaceport , N-134
NASA/GSFC/Wallops Flight Facility
Wallops Island, VA 23337-5009
PH. 757-824-2335

MID-ATLANTIC REGIONAL SPACEPORT FACILITIES STUDY

Facility Name and Number: **Payload Processing Facility,
Building H-100**

Total Square Footage	19,800 Square feet
----------------------	--------------------

Facility Capabilities:

High Bay(s)					
Bay No.	Length	Width	Height	Door(s)	
				Width	Height
High Bay	80'	40'	62'	20'	60'
Low Bay	80'	40'	40'	35'	40'

Cranes			
Bay No.	Hook Height	Capacity	Testing Frequency
High Bay	60'	40 Tons	<ul style="list-style-type: none"> Annual Inspection per: OSHA 29CFR 1910.179 and NASA Reg. NSS/GO-1740.9B Load Tested (125%) every four years Monthly Inspections
Low Bay	30'	(2) 20 Ton	

Clean Rooms				
Bay No.	Rating	Length	Width	Height
High Bay	Class 100,000 w/ 10,000 capability	TBD	TBD	TBD
Low Bay		TBD	TBD	TBD

Grounding Grids			
Bay No.	Type	Capacity	Testing Frequency
High Bay	Power Ground Access Controlled Quite Ground Lightening Protection	<25 ohms	Annual w/6 month visual
Low Bay		<25 ohms	Annual w/6 month visual
GSE Room		<25 ohms	Annual w/6 month visual

Electrical Power	
Available Power	<ul style="list-style-type: none"> 400 Cycle, 3 Phase
Backup/Emergency Power	<ul style="list-style-type: none"> Emergency Generator Portable Generators

Communications	
Fiber Optic	
Copper	
RF	

Other Work Area:

Storage: 1,000 Square Feet

MID-ATLANTIC REGIONAL SPACEPORT FACILITIES STUDY

Facility Name and Number: **Payload Processing Facility,
Building H-100**

Conference Room: 300 Square Feet
Personnel Work Space: 1,300 Square Feet

Unique Equipment:

Compressed Air Service: 125 PSI
Nitrogen Gas: 6000 PSI
GPS Feed from exterior antenna
Temperature & Humidity Control

Security	
Highest DOD Security Level (<i>Certification Date:</i>)	NA
Security System Type	24 Hour Security Guard
AutoReport	NA
COMSEC	<ul style="list-style-type: none">• NASA Goddard has a COMSEC account at Goddard• Navy has a COMSEC account at Wallops Island
Security Safes	<ul style="list-style-type: none">• Available to be moved to desired location• Customer specified or specific combinations available

Fire Control	
Fire Suppression System	None
AutoReport	Yes